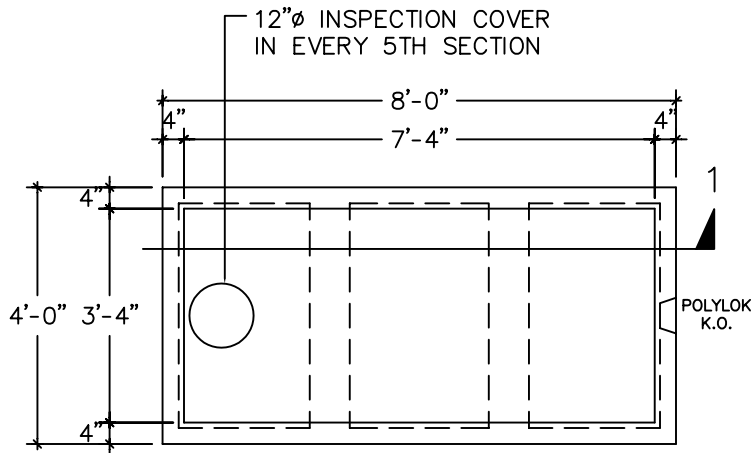


12" LOW PROFILE HS-20 LEACHING GALLEY

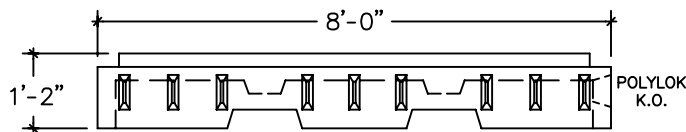
GALLEY DESIGN SPECIFICATIONS
CONFORMS TO LATEST:
ASTM DESIGNATION C913

NOTES:

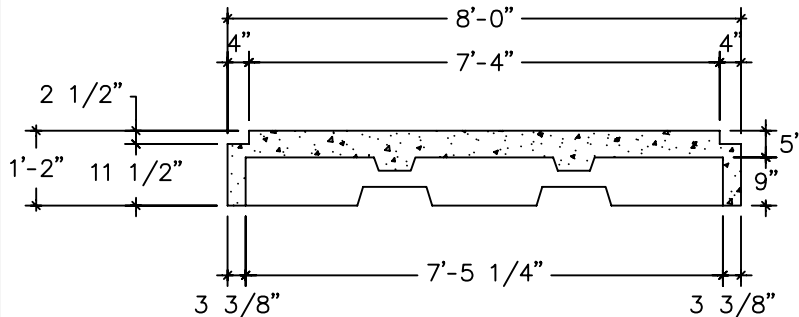
1. PIPE INLET AND OUTLET LOCATIONS HAVE POLYLOK II PIPE SEALS, TYPICAL. CUSTOM KNOCKOUTS CAN BE CAST ON REQUEST.
2. REINFORCING STEEL DEFORMED BARS CONFORM TO LATEST ASTM SPECIFICATION A615, GRADE 60.
3. CONCRETE COMPRESSIVE STRENGTH- 4000 PSI AT 28 DAYS SELF COMPACTING CONCRETE MIX.
4. METHOD OF MANUFACTURE: WET CAST.
5. SECTION IS MONOLITHIC.
6. THE GALLEY IS DESIGNED FOR HS-20 LOADING w/18" OF SOIL COVER.
7. GALLEY SHALL BE POURED USING A SELF COMPACTING CONCRETE MIX.



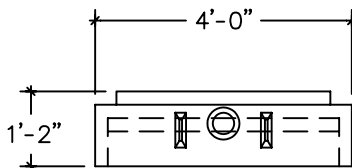
TOP VIEW
(ROOF SLAB THICKNESS IS 5")



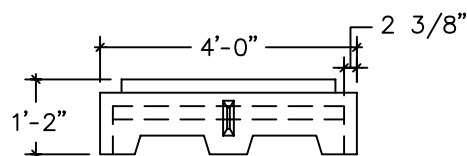
SIDE VIEW
(ROOF THICKNESS IS 5", 7 1/2" @ BEAMS)



SECTION 1



END VIEW (END SECTION)
(WALL THICKNESS IS 3")
(ROOF THICKNESS IS 5", 7 1/2" @ BEAMS)



END VIEW (CENTER SECTION)
(WALL THICKNESS IS 3")
(ROOF THICKNESS IS 5", 7 1/2" @ BEAMS)

WEIGHT CHART

| PRODUCT | APPROX WEIGHT |
|------------|---------------|
| 12" GALLEY | 2450 LBS. |

LEACHING DATA

| FLOW LINE (INCHES) | EFFECTIVE LEACHING CREDIT (SQ.FT./LF) | LEACHING AREA (SQ.FT./UNIT) | INSIDE CAPACITY (GALLONS) |
|-----------------------|---|-----------------------------------|------------------------------|
| 6 | 5.9 | 47.2 | 140 |



UNITED CONCRETE PRODUCTS INC.

173 CHURCH STREET
YALESVILLE, CT 06492

TEL. 800 234-3119
(203) 269-3119

FAX. (203) 265-4941