

2200 GALLON DRY WELL

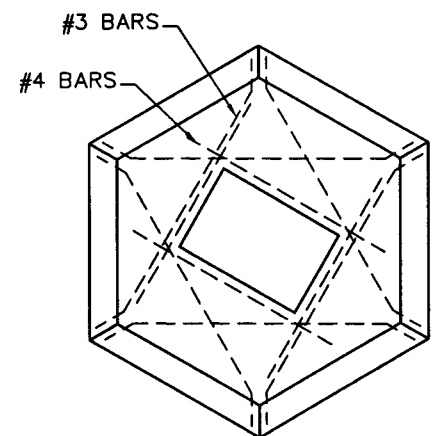
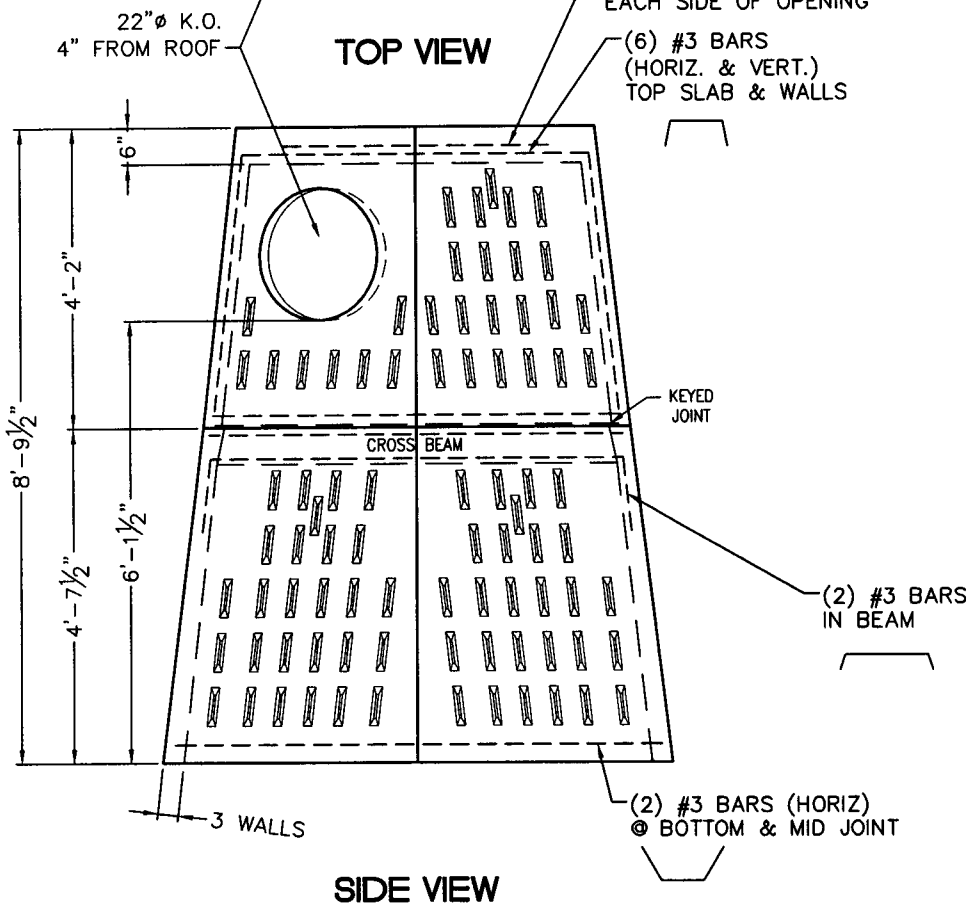
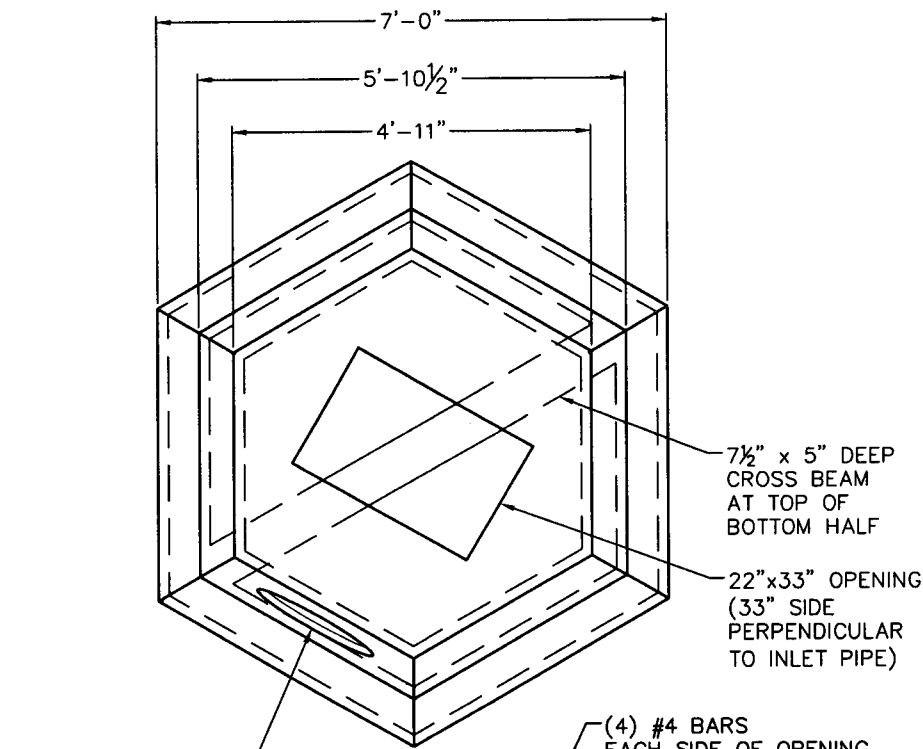
GALLEY DESIGN SPECIFICATIONS
CONFORMS TO LATEST:
ASTM DESIGNATION C913

NOTES:

1. REINFORCING STEEL DEFORMED BARS CONFORM TO LATEST ASTM SPECIFICATION A615, GRADE 60.
1" MIN. COVER
2. CONCRETE COMPRESSIVE STRENGTH- 4,000 PSI AT 28 DAYS
SELF COMPACTING CONCRETE MIX.
3. METHOD OF MANUFACTURE: WET CAST.
4. EACH SECTION IS MONOLITHIC.
5. DESIGNED FOR HS-20 LOADING
WITH 6" to 18" OF EARTH COVER.

WEIGHT CHART

PRODUCT	APPROX WEIGHT
2200 GALLON DRY WELL	6800 LBS.



**REINFORCING
IN TOP SECTION**

**UNITED CONCRETE
PRODUCTS, Inc.**

173 CHURCH STREET
YALESVILLE, CT 06492
TEL: (203)-269-3119
FAX: (203)-265-4941

HEAVY DUTY DRY WELL

CUSTOMER

JOB

LOCATION

CTDOT #161-118 + 161-124

RECONSTRUCTION OF RT 7, WILTON, CT

SCALE

NONE

DATE 9/22/06

SHEET

DRW

DH

CHK

JLT

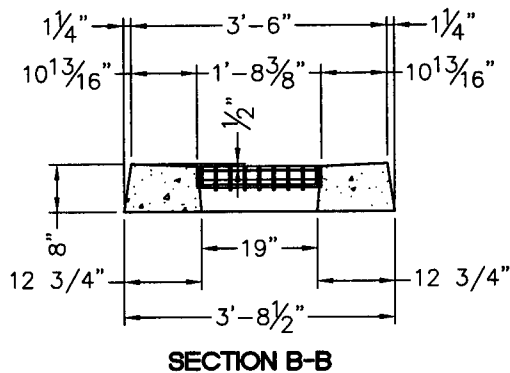
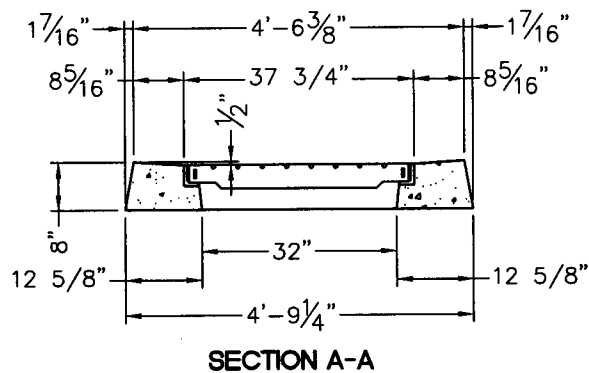
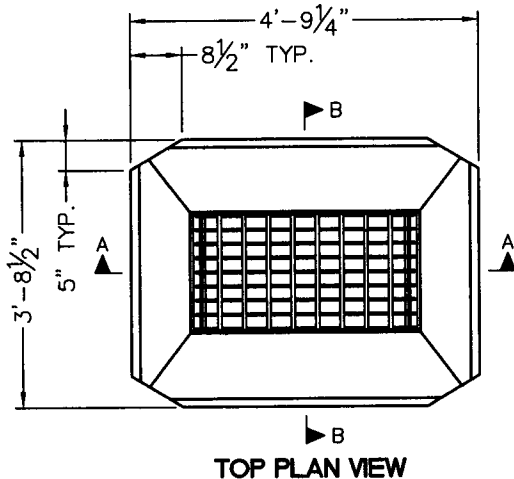
SK-1

TYPE "C-L" CATCH BASIN TOP

DESIGN COMFORMS TO CONNDOT
STANDARD DRAWINGS 507 I,J,K&M.

DESIGN NOTES:

1. REINFORCING STEEL CONFORMS TO LATEST ASTM SPECIFICATION A185.
2. CONCRETE COMPRESSIVE STRENGTH- 4000 PSI AT 28 DAYS.
3. METHOD OF MANUFACTURE: WET CAST.
4. TOP SHALL BE CAST USING A SELF COMPACTING CONCRETE MIX.
5. SECTION IS MONOLITHIC.



WEIGHT CHART

PRODUCT	APPROX WEIGHT
"CL" TOP	4000 LBS.

UNITED CONCRETE
PRODUCTS, Inc.

173 CHURCH STREET
YALESVILLE, CT 06492
TEL: (203)-269-3119
FAX: (203)-265-4941

SPECIAL C-L CATCH BASIN TOP

CUSTOMER

JOB

LOCATION

SCALE

NONE

DATE 9/22/06

SHEET

DRW

DH

CHK

JLT

SK-4