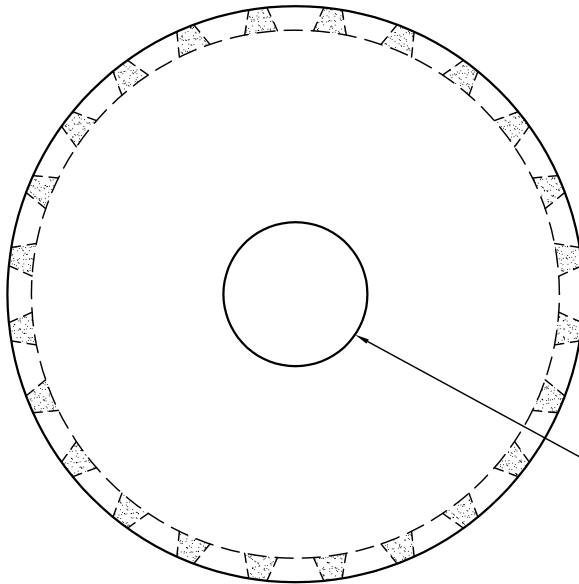


8' DIA. DRY WELL

NOTES:

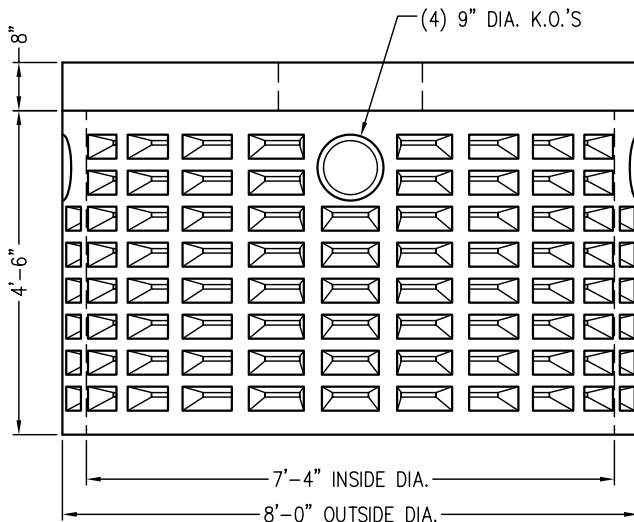
1. REINFORCING STEEL DEFORMED BARS CONFORM TO LATEST ASTM SPECIFICATION A615, GRADE 60.
2. REINFORCING STEEL WELDED WIRE FABRIC CONFORMS TO LATEST ASTM SPECIFICATION A185.
3. CONCRETE COMPRESSIVE STRENGTH—4,000 PSI AT 28 DAYS SELF COMPACTING CONCRETE MIX.
4. DRY WELL IS DESIGNED FOR HS-20 LOADING WITH 18" SOIL COVER.



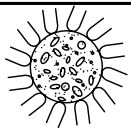
24" DIA. OPENING
CENTERED

TOP VIEW

WEIGHT CHART	
PRODUCT	APPROX. WEIGHT
TOP SLAB	5,200 LBS.
4½' DRY WELL	4,700 LBS.



ELEV. SECTION



UNITED CONCRETE PRODUCTS INC.

173 CHURCH STREET
YALESVILLE, CT 06492

TEL. (800) 234-3119
TEL. (203) 269-3119

FAX. (203) 265-4941
WWW.UNITEDCONCRETE.COM