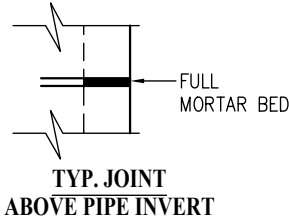
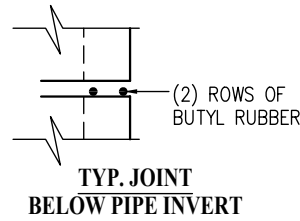
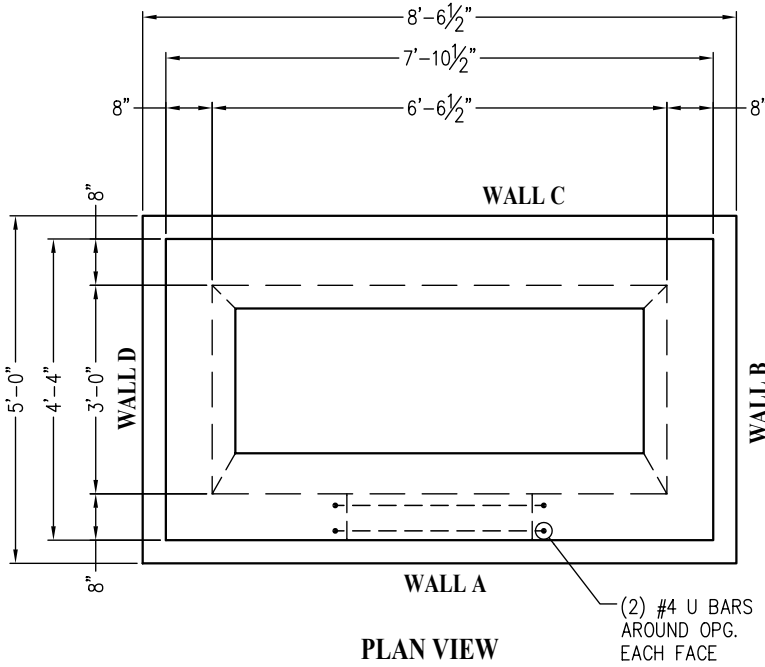


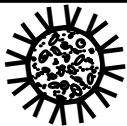
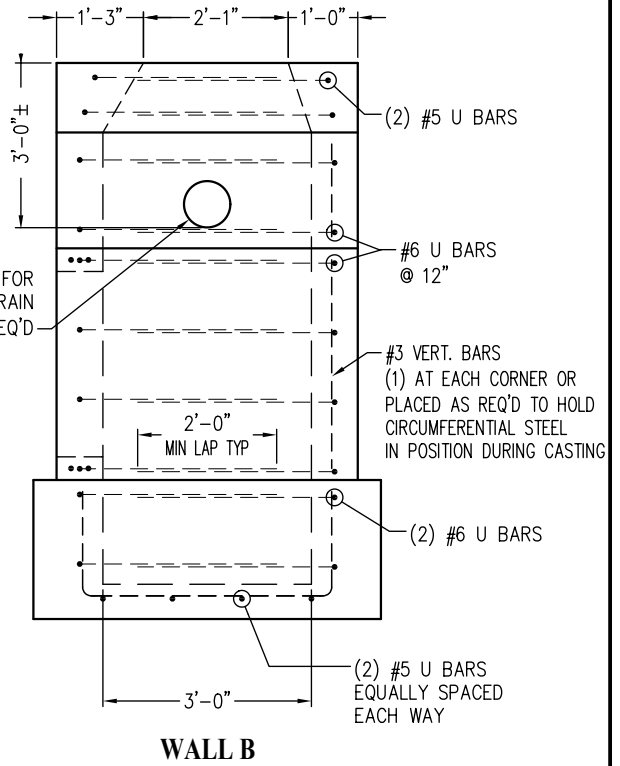
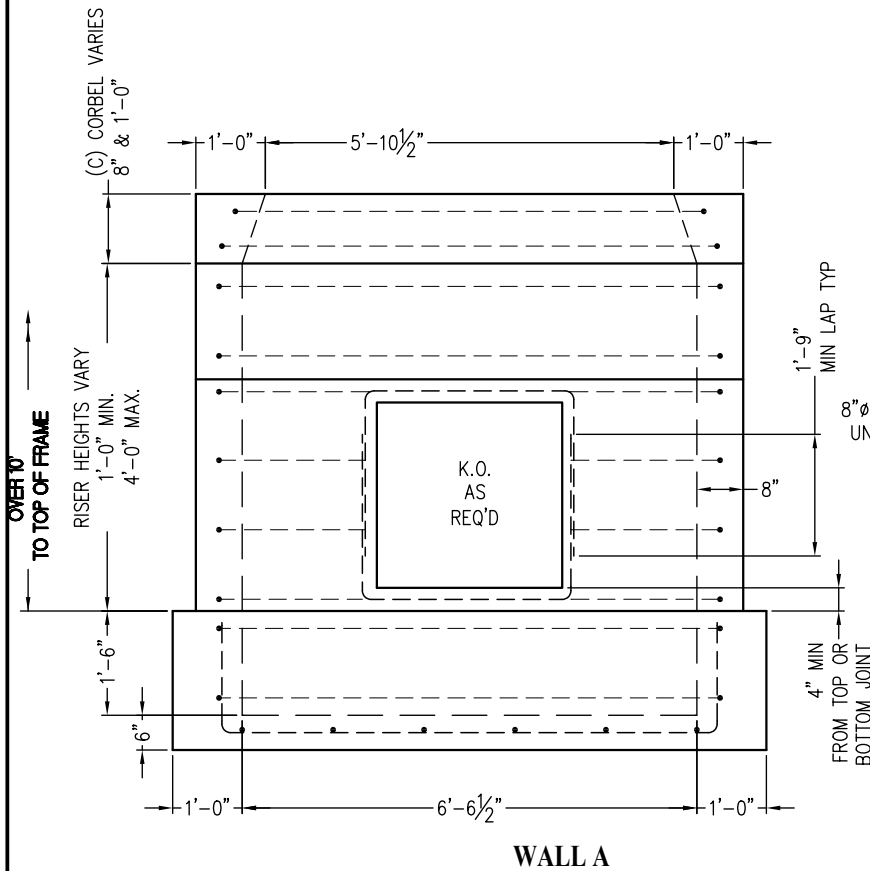
CTDOT TYPE C DOUBLE GRATE TYPE II CATCH BASIN COMPONENTS OVER 10'



NOTES:

1. JOINT SEALANT IS BUTYL RUBBER MASTIC TYPE SEAL THAT CONFORMS TO LATEST AASHTO SPECIFICATION SS-S-210(210-A).
2. REINFORCING STEEL DEFORMED BARS CONFORM TO LATEST ASTM SPECIFICATION A615, GRADE 60 MIN. COVER 2" UNLESS NOTED.
3. CONCRETE COMPRESSIVE STRENGTH- 4,000 PSI AT 28 DAYS, SELF COMPACTING CONCRETE MIX.
4. METHOD OF MANUFACTURE: WET CAST.
5. SUMP SECTION IS MONOLITHIC.
6. CONFORMS TO CTDOT STANDARD SHEET #HW-507_06, DATED 9-18-2009

WEIGHT CHART	
PRODUCT	APPROX. WEIGHT
8" WALL RISER	2,300 LBS./LF
12" WALL RISER	3,600 LBS./LF
SUMP SECTION	8,700 LBS.



UNITED CONCRETE PRODUCTS INC.

173 CHURCH STREET
YALESVILLE, CT 06492

TEL. (800) 234-3119
TEL. (203) 269-3119

FAX. (203) 265-4941
WWW.UNITEDCONCRETE.COM