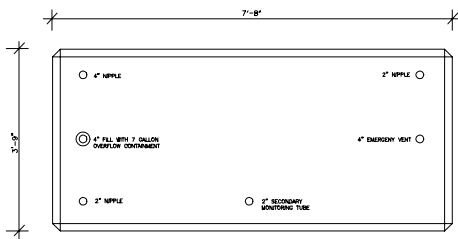
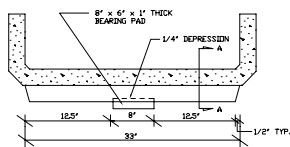
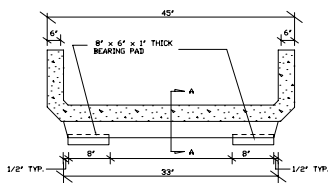


SECTION

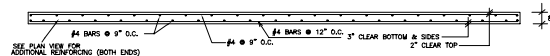


NOTE: RED CAP ALL FITTINGS

OUTLET PLAN

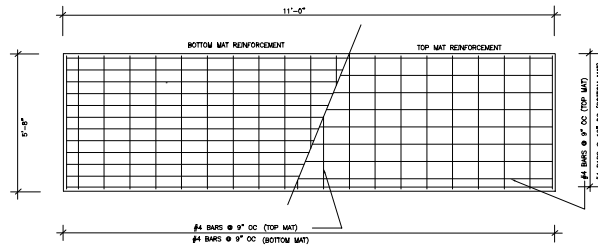


SECTION A-A



SECTION - SLAB REINFORCING

NOTE:
6" SLAB IS REQUIRED WHEN POURED IN THE FIELD
6" SLAB IS AVAILABLE WHEN ORDERED IN PRECAST FROM UNITED CONCRETE



PLAN - SLAB REINFORCING

NOTES:
CONCRETE COMPRESSIVE STRENGTH: 5,000 psi @ 28 DAYS
REINFORCING STEEL SHALL COMPLY WITH ASTM A631 GRADE 60
OR ASTM A631 GRADE 60, BAR BENDING AND PLACEMENT
SHALL COMPLY WITH LATEST AIA STANDARDS.
LETING INSERTS FOR HANDLING SHALL BE INSTALLED
PER MANUFACTURER'S REQUIREMENTS.
APPROXIMATE SLAB WEIGHT = 5,500 lbs.
MAX LOAD ON SOL = 3000 psf.

SLAB DETAILS
FOR
CONVAULT
1000 GALLON TANK
UNITED CONCRETE PRODUCTS, INC.
173 CHURCH STREET
YALESVILLE, CT
(203) 269-3119
(203) 265-4941 FAX

GENERAL NOTES:
STEEL TANK SHALL BE U.L. LISTED FOR ABOVE GROUND
STORAGE OF FLAMMABLE LIQUIDS.
STEEL TANK SKIN SHALL BE 10 GAUGE OR 7 GAUGE THICK A.S.T.M. A-36
STEEL PLATE.
STEEL TANK AND SECONDARY CONTAINMENT SHALL BE
ENCASED IN 6" OF REINFORCED CONCRETE.
CONCRETE COMPRESSIVE STRENGTH = 5,000 psi @ 28 DAYS
THE VAULT SHALL BE OF A MONOLITHIC (SEAMLESS
AND CONTINUOUS) CONCRETE POUR AND CONTAIN
NO COLD JOINTS OR HEAT SINKS (HEAT TRANSFER
POINTS) ON THE BOTTOM OR SIDES.
THE SECONDARY CONTAINMENT SHALL CONSIST OF
A 30 MIL HIGH-DENSITY CARBON LINED POLYETHYLENE
GEO-MEMBRANE.

* DESIGNED FOR SNOW LL = 80 psf

DRIG. DATE = 5/31/95