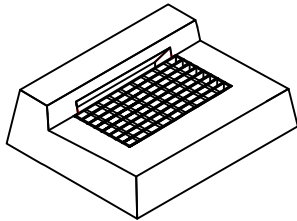


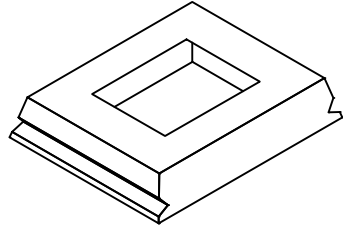
CATCH BASIN TOP

TYPE "C" CONC CURB
TOP SHOWN.
ADDITIONAL TOPS
AVAILABLE.



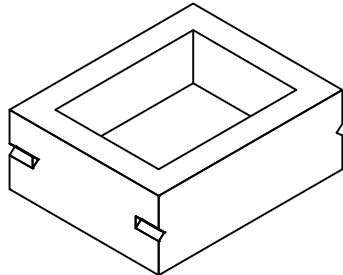
CORBEL

HEIGHTS AVAILABLE:
6", 8" OR 12"



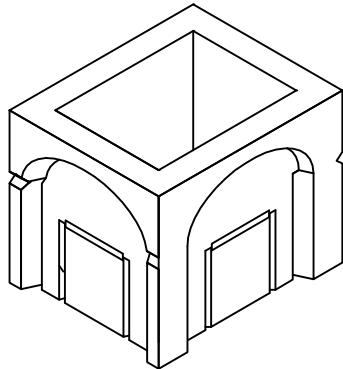
RISER

HEIGHTS AVAILABLE:
2' to 5'-0"
12" STOCK
18" STOCK
24" STOCK



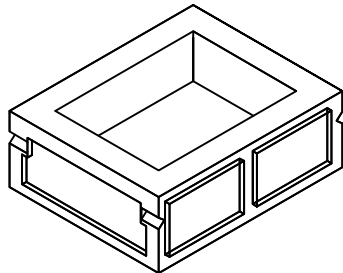
TRANSITION

HEIGHTS AVAILABLE:
18" STOCK
24" STOCK
30" STOCK
36" STOCK
48" STOCK



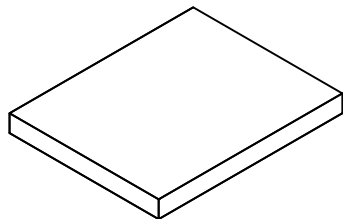
SUMP

HEIGHT:
INSIDE 18"
OUTSIDE 24"



BASE SLAB

HEIGHT:
6"



STANDARD CATCH BASIN COMPONENTS

NOTES:

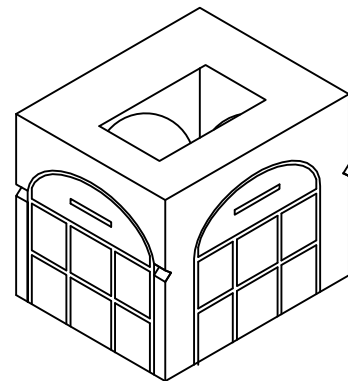
1. REINFORCING STEEL WELDED WIRE FABRIC CONFORMS TO LATEST ASTM SPECIFICATION A185.
2. REINFORCING STEEL DEFORMED BARS CONFORM TO LATEST ASTM SPECIFICATION A615/A706.
3. CONCRETE COMPRESSIVE STRENGTH- 4000 PSI AT 28 DAYS.
3. METHOD OF MANUFACTURE: WET CAST.
5. SECTION IS MONOLITHIC.
6. DESIGN LOAD: AASHTO H-20

WEIGHT CHART

PRODUCT	APPROX WEIGHT
6" BASE SLAB	1750 LBS.
SUMP	4100 LBS.
18" TRANSITION	3250 LBS.
24" TRANSITION	4500 LBS.
30" TRANSITION	4500 LBS.
36" TRANSITION	3250 LBS.
48" TRANSITION	4500 LBS.
12" RISER	1700 LBS.
18" RISER	2500 LBS.
24" COR-TRAN	2700 LBS.
30" COR-TRAN	3150 LBS.
36" COR-TRAN	3600 LBS.
48" COR-TRAN	4900 LBS.
6" CORBEL	1000 LBS.
12" CORBEL	1800 LBS.
18" CORBEL	2600 LBS.

COR-TRANS

HEIGHTS AVAILABLE:
24" STOCK
30" STOCK
36" STOCK
48" STOCK



UNITED CONCRETE PRODUCTS INC.

173 CHURCH STREET
YALESVILLE, CT 06492

TEL. 800 234-3119
(203) 269-3119

FAX. (203) 265-4941